

WAXCEUTICAL[®]



Cosmeceutical Waxing

depilève[®]

WAXCEUTICAL®



The beauty world is quickly evolving, with more advanced technology and new treatments becoming available. Clients are more knowledgeable than ever, and with information readily available online they can easily research and self-educate.

Clients are seeking the best results and innovation will influence their decision and the investment they make.

At Depilève, our goal is to lead the Waxing Industry evolution by focusing on modern, innovative treatments that go beyond the client's expectations.

2in1

Waxing
+
Skincare
Treatment

We have developed and patented a unique and exclusive hair removal protocol called WAXCEUTICAL.



WHAT IS WAXCEUTICAL[®] ?

WAXCEUTICAL is a gentle hair removal treatment that also offers effective skin solutions for concerns such as hyperpigmentation, ageing, dryness, and sensitivity.

WAXCEUTICAL waxes have osmotic properties, acting as a vehicle for active ingredients to penetrate to the deeper skin layers. The dilation of pores allows for micro channels to be created which optimizes maximum product penetration.

The wax acts as an occlusive cosmetic mask, trapping heat in the skin and increasing blood flow to improve ingredient penetration and preventing the loss of active ingredients.

This innovative treatment also has skin resurfacing effect for a luminous, glowing complexion.

MEET OUR LINES



The world's first hair removal range that delivers actives to the deeper skin layers. The brightening ingredients help correct dull skin and uneven skin tone.



A treatment which supports aging skin. This range moisturizers and helps restore elasticity while delicately and painlessly removing the hair.

VAJACIAL

Intimate Skincare Treatments



A range formulated to gently treat and soothe the most sensitive, intimate areas.

WHAT DOES WAXCEUTICAL[®] OFFER?

A unique 2 in 1 wax mask, allowing the therapist to offer the most innovative and comfortable waxing and skincare treatments on the market.

WHAT IS OUR ADDED VALUE?

A new one-of-a-kind skin and hair removal experience coupled with the signature Depilève technique that distinguishes our waxing services.

HOW DOES IT WORK?

The cosmetics contain highly active skin ingredients. The patented wax formula creates a film layer on the skin which allows the ingredients to penetrate during the treatment. Immediately the skin is silky smooth, hydrated with overall improved skin condition.

The formula allows the therapist to apply extra thin layers to make the hair removal virtually painless. The warm temperature is ideal for sensitive skins and gentle hair removal.

Learn specialist techniques from our expert trainers for the perfect epilation treatment with ultimate client comfort.



WHAT STRENGTHS DOES WAXCEUTICAL[®] OFFER OVER TRADITIONAL WAXING SERVICES?



WAXCEUTICAL[®] WAXES

Patented formulas with active ingredients in an oil-soluble formula. The ingredients in the wax are absorbed into the skin due to the thermal effect to ensure a unique and expert epilation treatment.



SPECIALIST SKIN CARE

The protocols are completed with cosmetics personalized to the skin concern, and can also be continued with at home. The skincare lines target different concerns such as: aging & rejuvenation, skin brightening, hyperpigmentation & dryness.



VISIBLE SKIN RESULTS

Brighter, healthier skin with a silky-smooth finish.



PROFESSIONAL AND UNIQUE TREATMENTS

These exclusive and ultra-comfortable treatments with exceptional results will guarantee client satisfaction.



MASTER THE TECHNIQUE

With the Depilève Waxing Academy! Ongoing support with our experts to teach you industry tips & tricks to maximize your businesses potential.

WHICH AREAS CAN I TREAT WITH WAXCEUTICAL®?



SOFT &
BRIGHT



FACIAL EPILATION

LIP BRIGHT • BRIGHT & BEAUTIFUL BROWS
BRIGHT NOSE PORE REFINING • FACIAL BRIGHT & EVEN



INTIMATE EPILATION

UNDERARM BRIGHT • BIKINI BRIGHT
BRAZILIAN BRIGHT • HOLLYWOOD BRIGHT



BODY EPILATION

ARM BRIGHT • HAND BRIGHT • FULL LEG BRIGHT



DNA



FACIAL EPILATION

YOUTHFUL LIP TREATMENT • EYEBROW SCULPT & LIFT
NOSE PORE REFINING • FACIAL REJUVENATION



INTIMATE EPILATION

UNDERARM SKIN TONING • BIKINI FIRMING
BRAZILIAN REMODELING • HOLLYWOOD REJUVENATION



BODY EPILATION

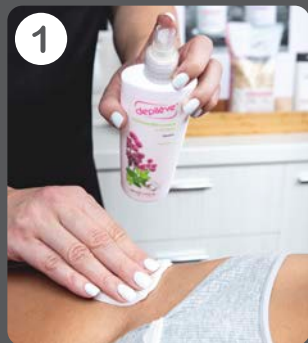
ARM TONING • YOUNGER HANDS • THIGH FIRMING
FULL LEG REJUVENATION

BECOME A WAXCEUTICAL[®] EXPERT AND GROW YOUR CUSTOMER LOYALTY

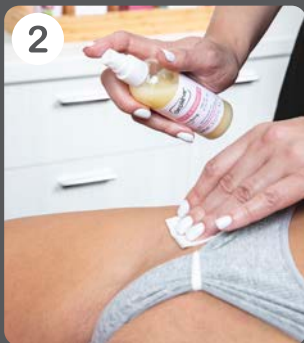
This exclusive and unique treatment requires your full attention to detail and expert client care! We will teach you how to take your treatments to the next level for a memorable experience your clients will be sure to return for more.

WAXCEUTICAL training will provide you with a comprehensive guide to show you the treatment step-by-step to ensure you are able to complete a flawless protocol. The small details such as the client questionnaire, correct positioning of the client and your farewell will truly make a difference to your treatments. We want all our Depilève specialists to be confident in their abilities!

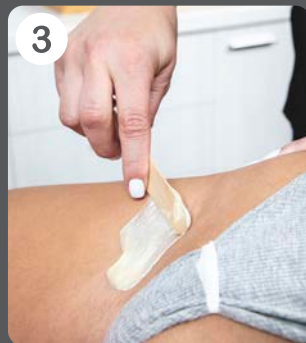
STEP BY STEP



1
Cleanse the skin with the appropriate Depilève PRE-WAXING LOTION.



2
Apply the DNA or SOFT & BRIGHT SERUM.



3
Apply the most suitable WAXCEUTICAL WAX to the area being treated.



4
Active ingredients penetrate the skin, and then the wax is removed with the hair.



5
Apply the DNA or SOFT & BRIGHT SERUM.



6
While the pores are relaxed, apply the finishing cream.



SOFT & BRIGHT

A hair removal range capable of delivering active ingredients to the deepest skin layers for a truly effective skin brightening treatment.

It is particularly effective for skin types which have more active Melanin and are more susceptible to hyperpigmentation. This protocol brightens and evens the skin tone. The actives help to reduce the appearance of hyper-pigmented areas including previous blemishes from skin traumas.

The products are formulated to treat existing hyperpigmentation and prevent further formation.

ACTIVE INGREDIENTS



GATULINE® SPOT LIGHT

Hero ingredient acts on hyper-pigmented areas and prevents further formation at Epidermal & Dermal levels.



ALPHA-ARBUTIN

Active ingredient developed to inhibit the enzyme Tyrosinase, which is responsible for stimulating Melanin production.



WHITE MULBERRY

Effectively brightens hyperpigmentation.



CITRUS UNSHIU PEEL (JAPANESE MANDARIN)

A powerful Tyrosinase inhibitor to combat overactive Melanocytes.

SOFT & BRIGHT WAXES

Luscious creamy textures, formulated with BIO-BASED resins. Contains Melanin enzyme inhibitors. The waxes provide an effective epilation, removing the most stubborn hairs yet are gentle on the skin. Discover even and luminous skin without any irritation post-treatment.



WAXCEUTICAL SOFT & BRIGHT CREAM STRIP WAX

VCDEWSB800 • 800 ml e 27.05 Fl. Oz.
VCDEWSB400 • 400 ml e 13.52 Fl. Oz.



WAXCEUTICAL SOFT & BRIGHT CREAM FILM WAX

VCDEWSBF50 • 500 g e 17.6 Oz.



WAXCEUTICAL SOFT & BRIGHT ROLL ON WAX

VCRDWSB10 • 100 g e 3.4 Fl. Oz.



SOFT & BRIGHT COSMETICS



WAXCEUTICAL SOFT & BRIGHT CLARIFYING SERUM

VEDEWSBS10 • 100 ml e 3.5 Fl. Oz.

Formulated with plant-extracts Gatuline Spot Light and Citrus Unshiu to target hyper-pigmented areas.



WAXCEUTICAL SOFT & BRIGHT CLARIFYING LOTION

VEDEWSBB20 • 200 ml e 6.76 Fl. Oz.

Face and body lotion formulated with Gatuline® Spot Light, enriched with Shea butter to provide nutrition and hydration for silky-soft skin.



DNA treatment protects the skin against loss of elasticity, firms and supports aging skin while painlessly removing the hair

The treatment protocol infuses the skin with coenzyme Q10, DNA Filaments and Natural Moisturizing Factors for a rejuvenating effect. The wax microfilm helps protect the skin and encourages absorption of active ingredients.

The DNA CRYSTAL FILM WAX has a color-changing feature that alerts the therapist when it is time to remove the wax strip once it is dry.

ACTIVE INGREDIENTS



COENZYME Q10

Stimulates cell regeneration to improve loss of elasticity and slow wrinkle formation.



MARINE DNA FILAMENTS

Aids skin repair and strengthens skin cells for a healthier appearance.



NMF (NATURAL MOISTURIZING FACTOR)

Protects against dehydration and restores lost levels of moisture. Strengthens the hydro-lipidic skin barrier to prevent trans-epidermal water loss.

DNA WAXES & COSMETICS



WAXCEUTICAL DNA CRYSTAL FILM WAX

VCDEWDNAF8 • 800 ml e 27.05 Fl. Oz.

VCDEWDCHF40 • 400 ml e 13.52 Fl. Oz.

This crystal (non-rosin) film wax is an innovative protocol that allows for skin rejuvenation and gentle hair removal simultaneously. Contains actives which respect maturing skin and help restore skin youthfulness. The wax changes color when ready to remove!



WAXCEUTICAL DNA REJUVENATING SERUM

VEDEWDNS10 • 100 ml e 3.5 Fl. Oz.

A serum specially formulated with anti-aging ingredients suitable for the face and body areas. Combats loss of firmness, fine lines & dry, dehydrated skin.



WAXCEUTICAL DNA THERMO MASK

VCDEWDTM40 • 400 ml e 13.52 Fl. Oz.

An occlusive thermal mask with added moisturizing agents and mica to offer deep hydration, improving the skin's radiance, and encouraging penetration of active ingredients for visible, lasting results.



INTRODUCING VAJACIAL

A new professional treatment for the delicate bikini area to smooth, tone and eliminate ingrown hair problems.

INGROWN HAIRS

- COOL VAJACIAL INGROWN HAIR TREATMENT
- WARM VAJACIAL INGROWN HAIR TREATMENT

HYPERPIGMENTATION

- COOL BRIGHT & EVEN VAJACIAL TREATMENT
- WARM BRIGHT & EVEN VAJACIAL TREATMENT

ANTI AGING

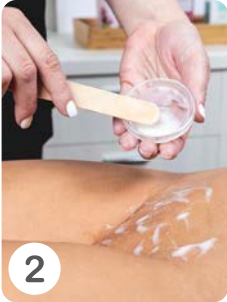
- COOL REJUVENATING VAJACIAL TREATMENT
- WARM REJUVENATING VAJACIAL TREATMENT

COOL VAJACIAL INGROWN HAIR TREATMENT

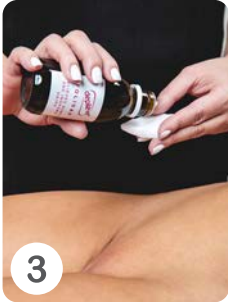
STEP BY STEP



1
Apply **Dermobalance** with a cotton pad over the area, tap lightly until fully absorbed.



2
Apply **Glycopeel** with a spatula. Leave to act for 3/5 min and a wet disposable towel.



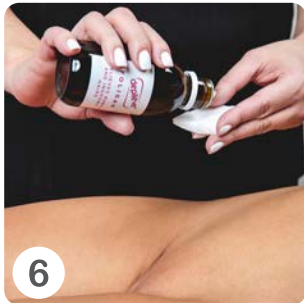
3
Apply **FOLISAN** over the entire area to be treated for ingrown hair and pimple formation.



4
Proceed with Ingrown hair removal using a precision Tweezer.



5
Apply **O2 BUBBLE MASK** with spatula, leave 7/10 min, so that its generate its oxygenating action. Remove the mask with spatula and the excess with a disposable towel.



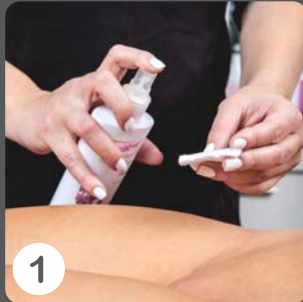
6
Apply the **FOLISAN** to the treated area.



7
Apply **FOLISERUM** to the treated area by gently massaging until completely absorbed.

WARM BRIGHT & EVEN VAJACIAL TREATMENT

STEP BY STEP



1
Apply **Dermobalance** with a cotton pad over the area, tap lightly until fully absorbed.



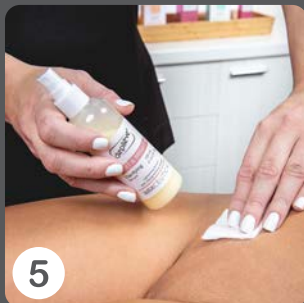
2
Apply **Glycopeel** with a spatula. Leave to act for 3/5 min and a wet disposable towel.



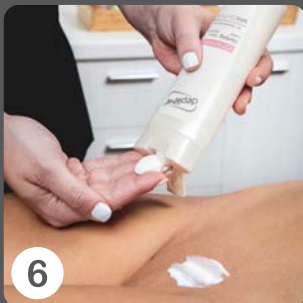
3
Apply **SOFT&BRIGHT CLARIFYING SERUM** over the area to be treated for the spots and gently massage until completely absorbed.



4
Apply **DNA THERMO MASK** with a spatula and leave it to act for 10/15 min and remove the whole mask starting by lifting off at the edges.



5
Apply **SOFT&BRIGHT CLARIFYING SERUM** over the entire area being treated for the spots and gently massage until completely absorbed.



6
Apply the **SOFT&BRIGHT CLARIFYING LOTION** to the treated area by gently massaging until completely absorbed.

WAXCEUTICAL[®] SKIN CARE

Depilève has developed exclusive skincare concepts as part of the unique Waxceutical protocols.

These high-performance, professional-only cosmetics help ensure an unforgettable salon treatment and bring long-lasting skin benefits.



WAXCEUTICAL O2 BUBBLE MASK

VEDEWO2BM3 • 10 x 3 ml e 0.10 Fl. Oz.

A purifying and refreshing bubbling mask that oxygenates to improve skin condition and skin health.

WAXCEUTICAL GLYCOPEEL

VEDEWGP105 • 10 x 5 ml e 0.17 Fl. Oz.

A skin peel with AHA's to brighten, smooth and promote cell regeneration. Works best on textured, rough skin!



depilève®

www.depilève.com



@depilèveglobal

VPDEWAXCE



8 435179 388710